

# ***AeroExcel***

*Laboratory Fume Cupboards built to last a lifetime*



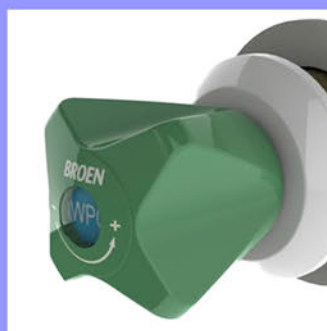


# AeroExcel

Laboratory Fume Cupboards built to last a lifetime

*The AeroExcel range of fume cupboards are designed and built to withstand the most demanding of uses and conditions.*

- One-Piece GRP Fascia
- Optional GRP Liner
- High Containment
- 10 year warranty
- Customisable



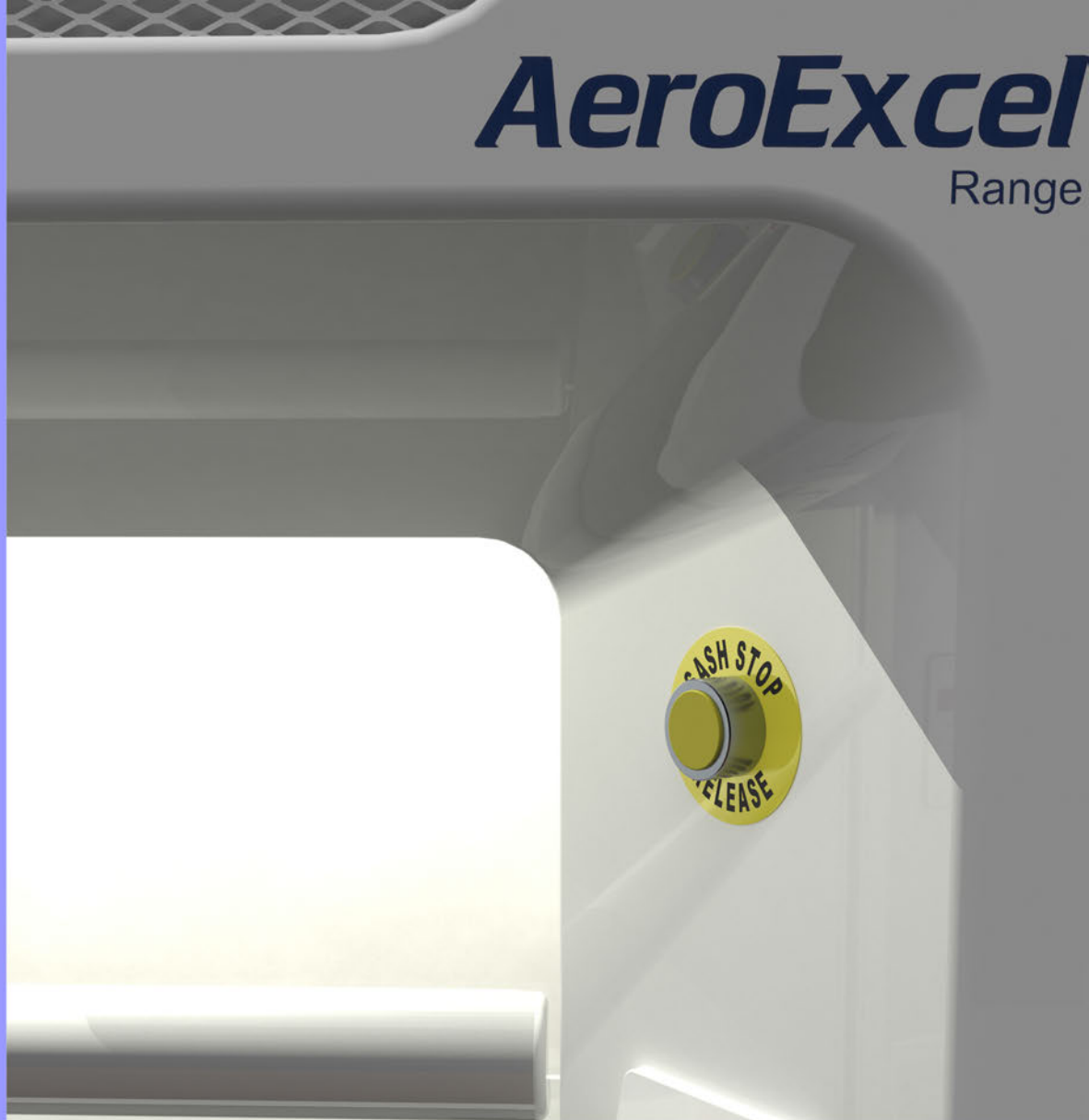


# AeroExcel

Laboratory Fume Cupboards built to last a lifetime

# AeroExcel

Range



## Standard Widths Available

1000mm    1200mm    1500mm    1800mm    2000mm

*The AeroExcel Range of Fume Cupboards are built to provide the highest possible safety, in the most demanding of environments.*

*Available in 5 standard widths, over 25 configurations and with too many options to list, these fume cupboards feature unique GRP moulded fascias and are built to last a lifetime.*

- Fully compliant with BS:EN 14175 (and the superseded BS:7258).
- Manufactured in the UK.
- Independently tested and proven to provide the very highest level of fume containment, even at energy-saving face velocities as low as 0.3m/sec.
- Built to last a lifetime. GRP provides a more durable and resistant surface than the standard materials offered by competitors.
- Available with our unique one-piece moulded GRP inner liner. Our GRP liner features wide-radius corners and edges, providing excellent airflow dynamics, easy cleaning and significantly fewer joints.
- Unique one-piece moulded GRP fascia. No visible fixings and wide-radius edges encourage smoother, less turbulent airflow into the fume cupboard chamber resulting in better fume capture and containment.
- Extremely low maintenance.
- Clean stylish looks to compliment the modern lab.
- 10 year warranty (conditions apply)

**The Fumair AeroExcel range of fume cupboards are designed and built to withstand the most demanding of uses and conditions.**

### **Standard features include:**

- Full compliance with BS:EN 14175.
- Class-leading containment at average face velocities as low as 0.3m/sec.
- One-piece moulded GRP front assembly with smooth aerofoiled sections into the chamber for improved airflow and containment.
- Sash bypass grille at high level to compensate for sash movement and eliminate excessively high face velocities at low sash opening heights.
- Inner chamber with full-width removable rear baffle, optimised to provide an even face velocity across the sash opening at all heights. Available in a choice of materials including our popular one-piece moulded GRP.
- Hinged maintenance panel above the chamber for access to duct connection, light assembly and sash mechanism.
- Worktop with all-round spillage containment edging and dripcups, sinks and troughs to suit requirements. Available in a choice of materials.
- Polyester powder coated steel sub-frame with stainless steel fixings.
- Vertically sliding 6mm thick toughened glass frame-less sash with full width aerofoiled handle. Sash suspended on 2 x 3mm stainless steel cables running over nylon pulleys with roller bearings. A fail-safe counterbalance arrangement ensures the sash is restrained in the unlikely event of one of the sash cables breaking.
- Epoxy powder coated steel support frame with heavy duty adjustable feet and 250mm deep service void to the rear.
- Sash stop mechanism that limits the sash to a safe working height (500mm). An override feature allows the sash to raise fully to facilitate loading and unloading of apparatus. The override feature automatically resets as the sash is lowered. Minimum height sash stops fitted to protect the user's fingers.
- Energy-saving LED lighting, providing in excess of 750 Lux at the work surface, sealed from the airstream and controlled from an engraved fused switch.
- Electrical sockets, water, gas and air services fitted to suit requirements.
- Bespoke sizes, walk-in and step-in models available.
- Suitable for Constant Volume or Variable Volume operation.

# AeroExcel

Laboratory Fume Cupboards built to last a lifetime



## **Measurements**

Height (External/Internal)	2400 / 1100mm (max)
Depth (External/Internal)	930 / 620 (max)
Sash Height (Max/Min)	760 / 25mm (safe working height stop 500mm)

## **Widths**

1000mm Overall Width	- 720mm Internal working width
1200mm Overall Width	- 920mm Internal working width
1500mm Overall Width	- 1220mm Internal working width
1800mm Overall Width	- 1520mm Internal working width
2000mm Overall Width	- 1720mm Internal working width